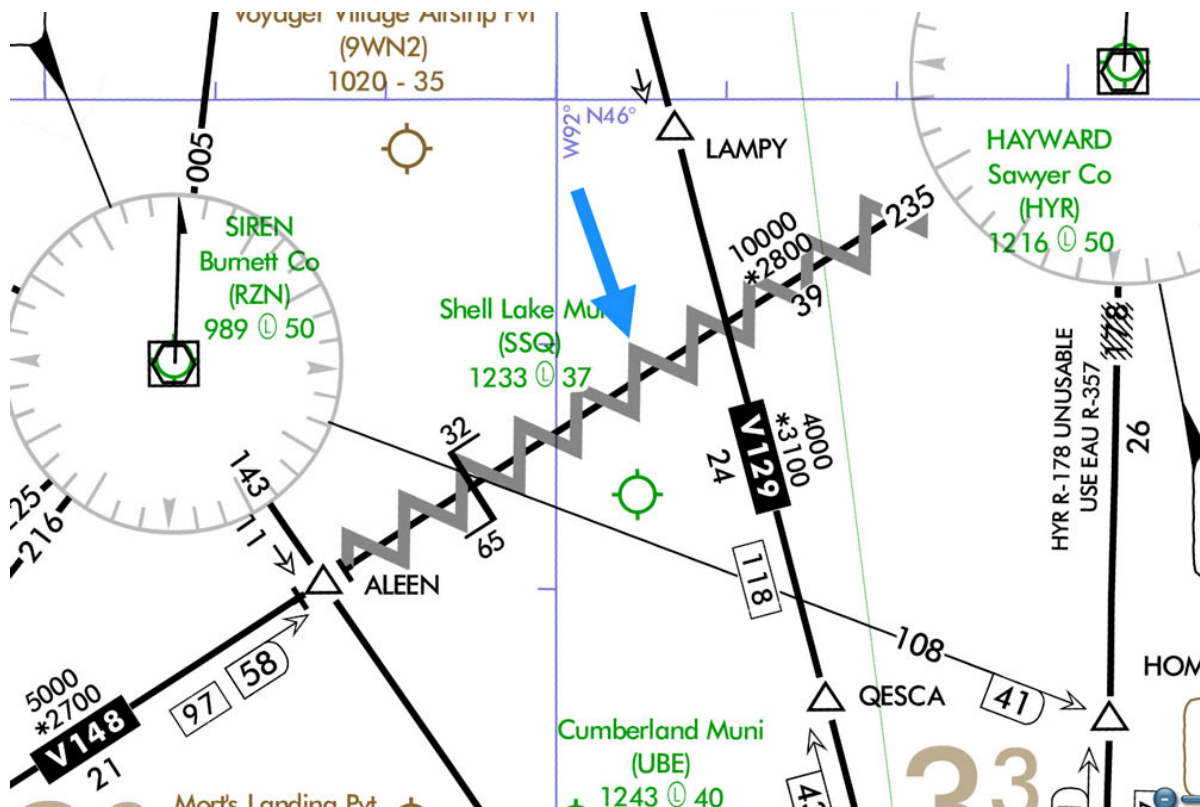


Do You Know What These 6 Uncommon Enroute Chart Symbols Mean?

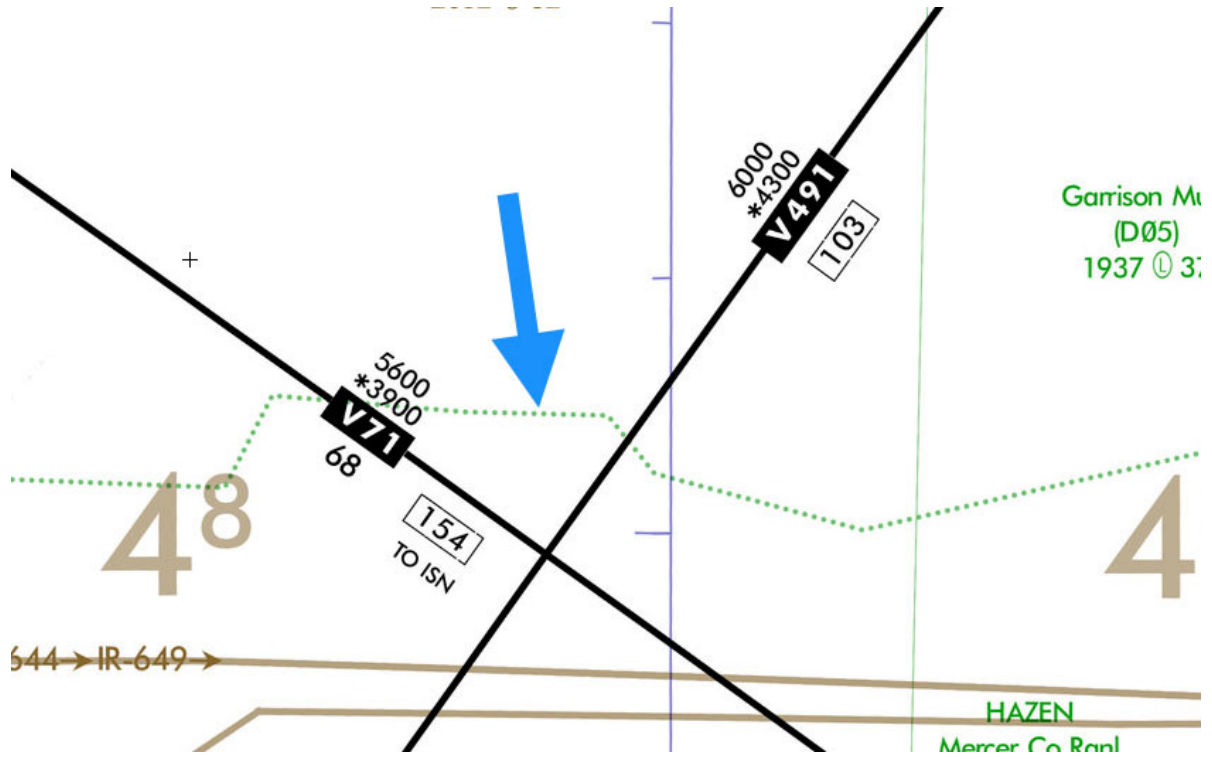
1) What does the zig-zag line mean pertaining to the Victor airway?



- a) Unusable route
- b) Loss of radar contact may occur
- c) High traffic route
- d) New route addition to airway

This route or segment is no longer usable.

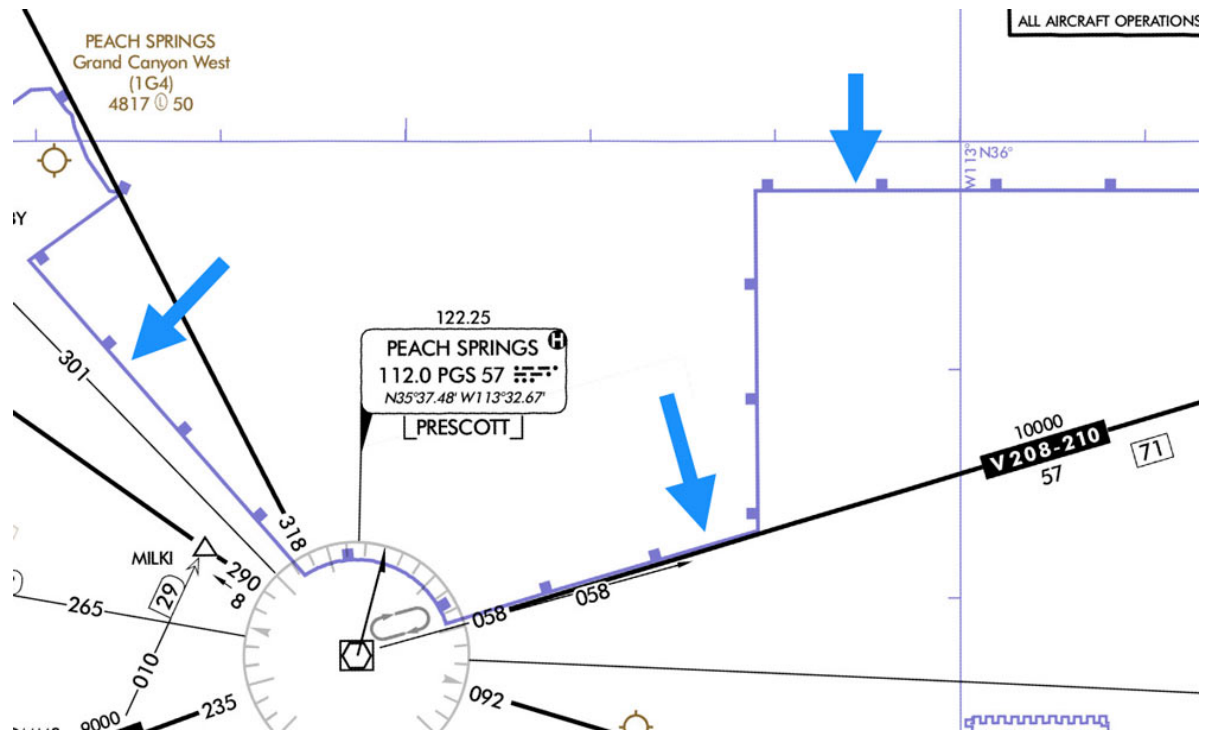
2) What is the green, dotted line running east to west?



- a) Major highway
- b) State border
- c) Time zone boundary
- d) River

This denotes the time zone boundary.

3) What does this blue border designate?



- a) Class E airspace to the surface
- b) Special Flight Rules Area
- c) Restricted airspace
- d) None of the above

This designates the Special Flight Rules Area or SFRA for the Grand Canyon National Park.

4) Why is this VOR solid black and not a black outline?



- a) It is a non-compulsory reporting point
- b) This is a terminal VOR
- c) It continually broadcast HIWAS
- d) It is a compulsory reporting point

This indicates that this VOR is a compulsory reporting point. In the event you were not in radar contact, you must let ATC know you are crossing this point.

5) What does the blue '9000G' signify?



- a) GPS/RNAV MEA
- b) OROCA
- c) GPS/RNAV MRA
- d) Updated MOCA

This means that this is the minimum enroute altitude (MEA) for GNSS RNAV equipped aircraft.

6) What is the half circle around the waypoint 'OPPEE'?



- a) Fly-over point
- b) By-pass route
- c) Airway restriction
- d) Fly-by point

This is referred to as a by-pass route. The centerline of the airway is displaced around the waypoint because the waypoint is not part of the route itself.

This quiz was prepared by boldmethod.com

Boldmethod produces sharable digital aviation and flight training content. They produce stories that teach, entertain and inspire, as well as training courses that help pilots reach certification.