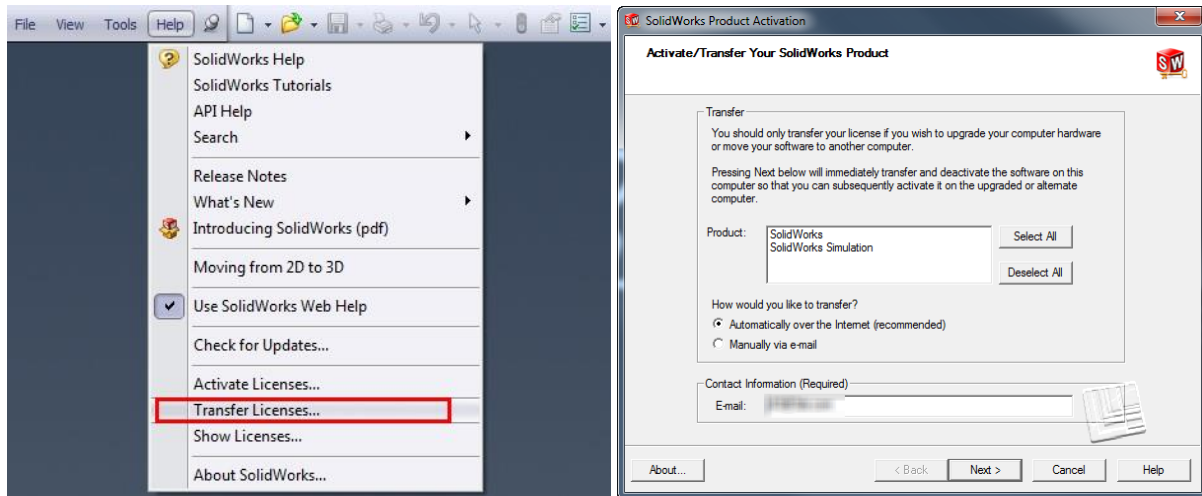


Clean Reinstallation of SOLIDWORKS

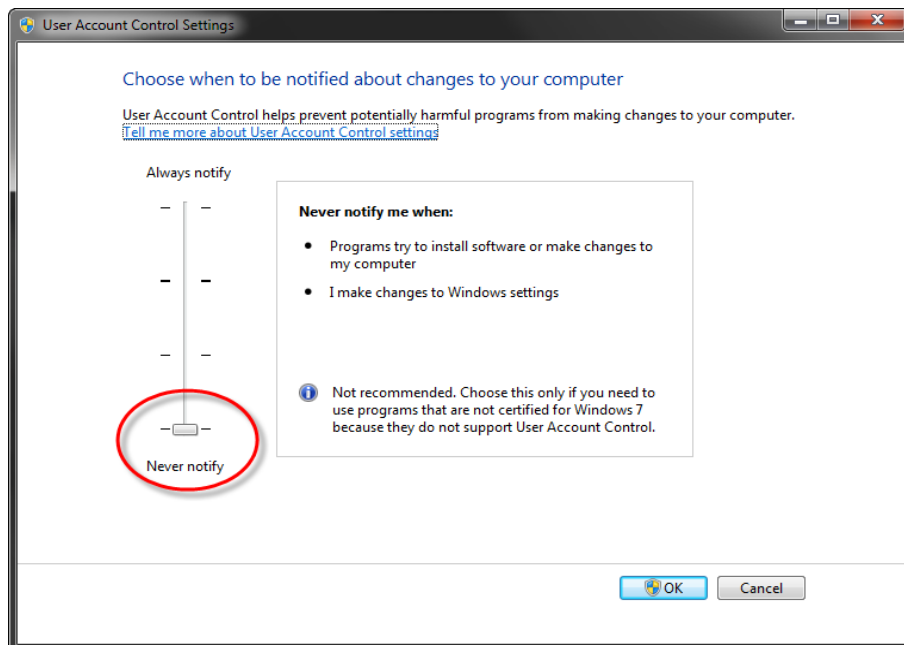
WARNING: This guide is provided by GSC as a reference only. This process should be performed by someone with IT experience, as improper execution could render SOLIDWORKS or the machine useless.

The Process – Uninstalling SOLIDWORKS

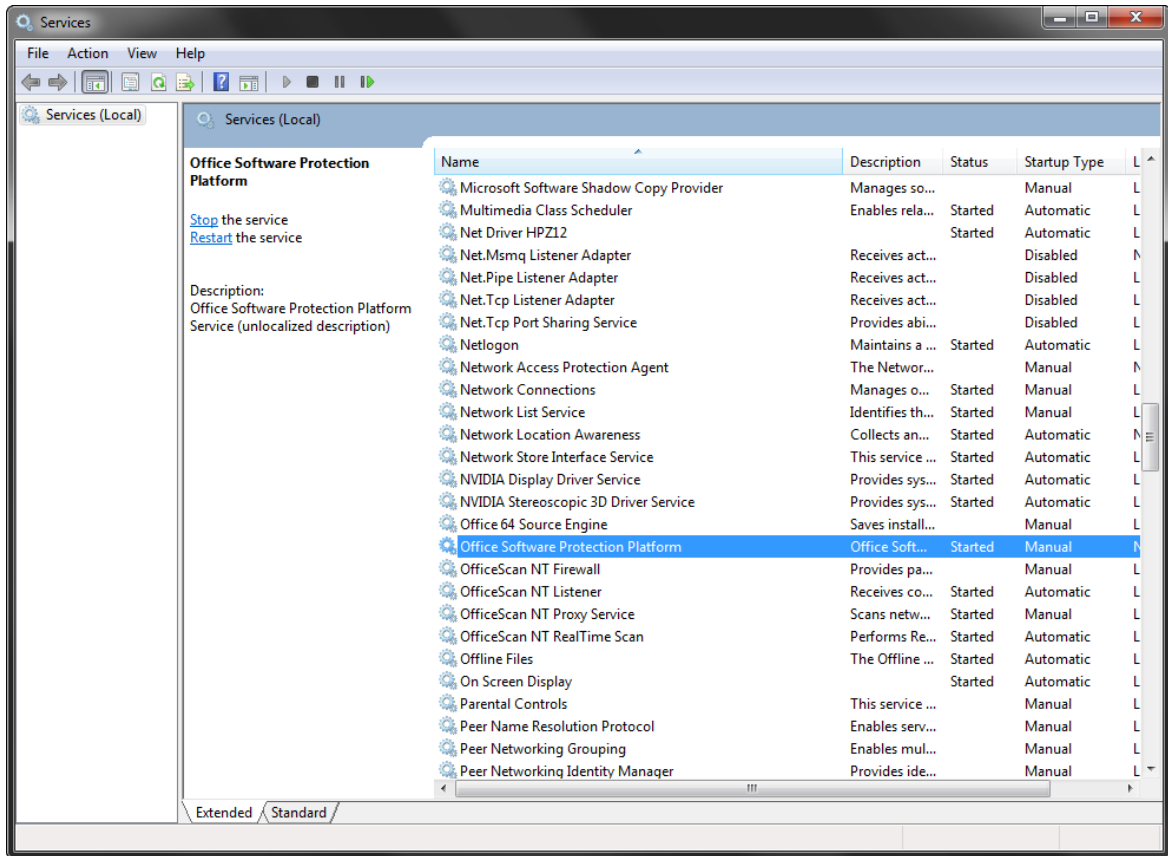
1. Transfer back the SOLIDWORKS license.



2. Turn UAC off. Please note a reboot is necessary for changes to take effect.

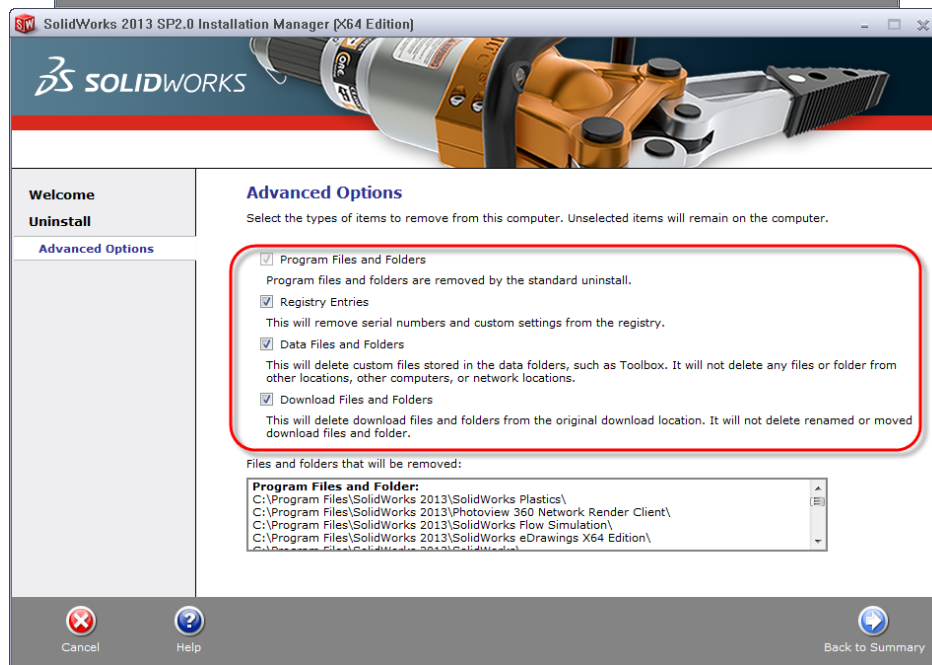
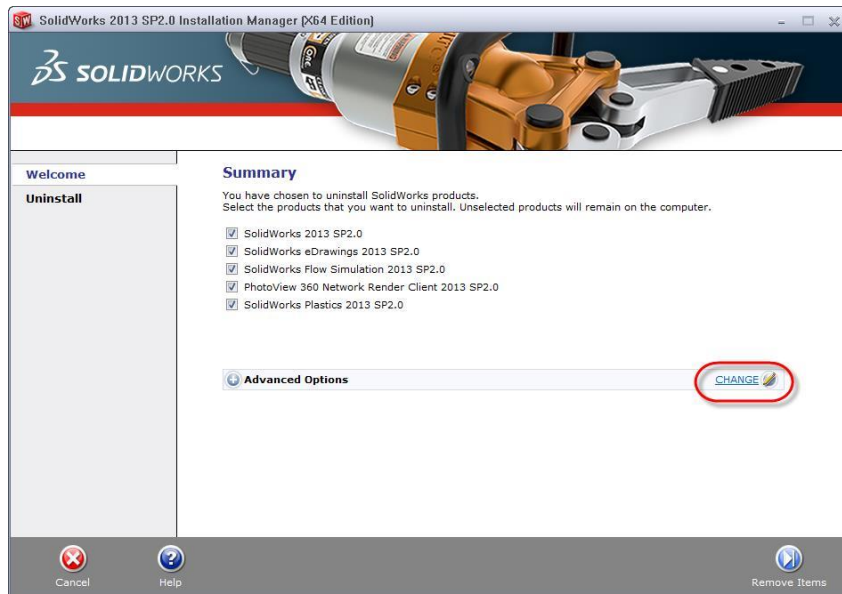


3. Ensure that no Antivirus or Firewall is active. To do this, go to Start and type 'Services'. In the Services window browse for the corresponding antivirus, firewall, etc. and disabling them.



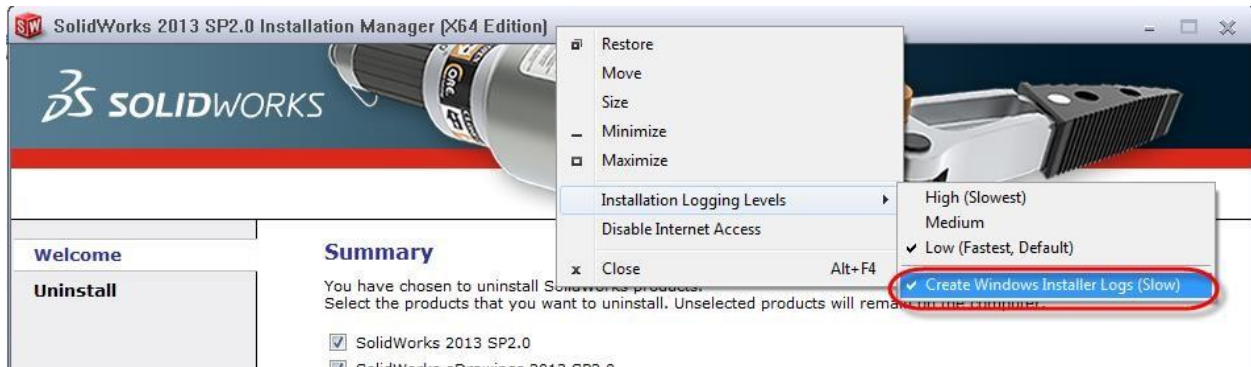
4. Start the Installation Manger to start the uninstalling process. In the Installation Manger, click 'Change' and make sure all options are selected.





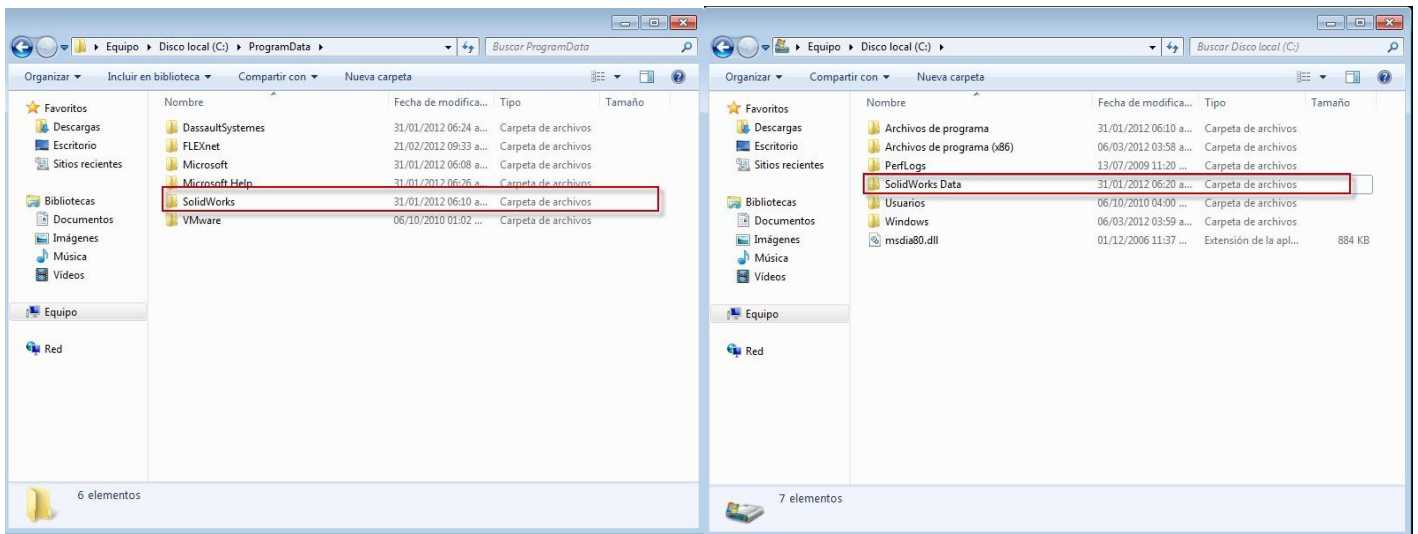
- IMPORTANT:** Right click the IM title bar (gray area) and select Installation Logging Levels > Create Windows Installer Logs (Slow)





6. Once SOLIDWORKS is uninstalled, delete the following folders if they exist. Note: making a backup is always recommended.

- C:\SolidWorks Data
- C:\ProgramData\Solidworks
- C:\Program Files\SolidWorks Corp



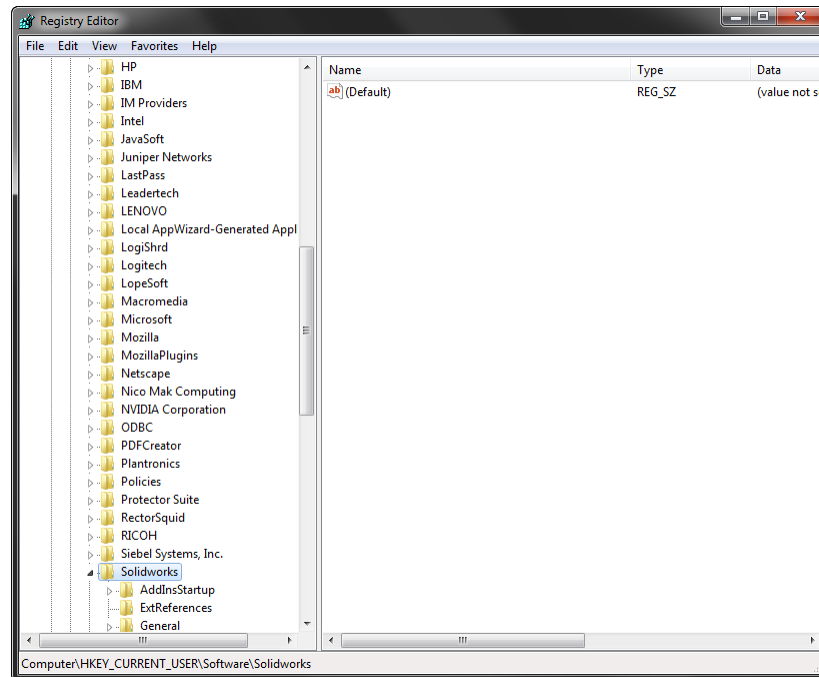
7. Open the Registry Key editor and rename/delete the following keys if they exist:

- HKEY_CURRENT_USER\SOFTWARE\SolidWorks
- HKEY_LOCAL_MACHINE\SOFTWARE\SolidWorks
- HKEY_LOCAL_MACHINE\SOFTWARE\Microsoft\VSTAHOST
- HKEY_LOCAL_MACHINE\SOFTWARE\Microsoft\VSTAHostConfig

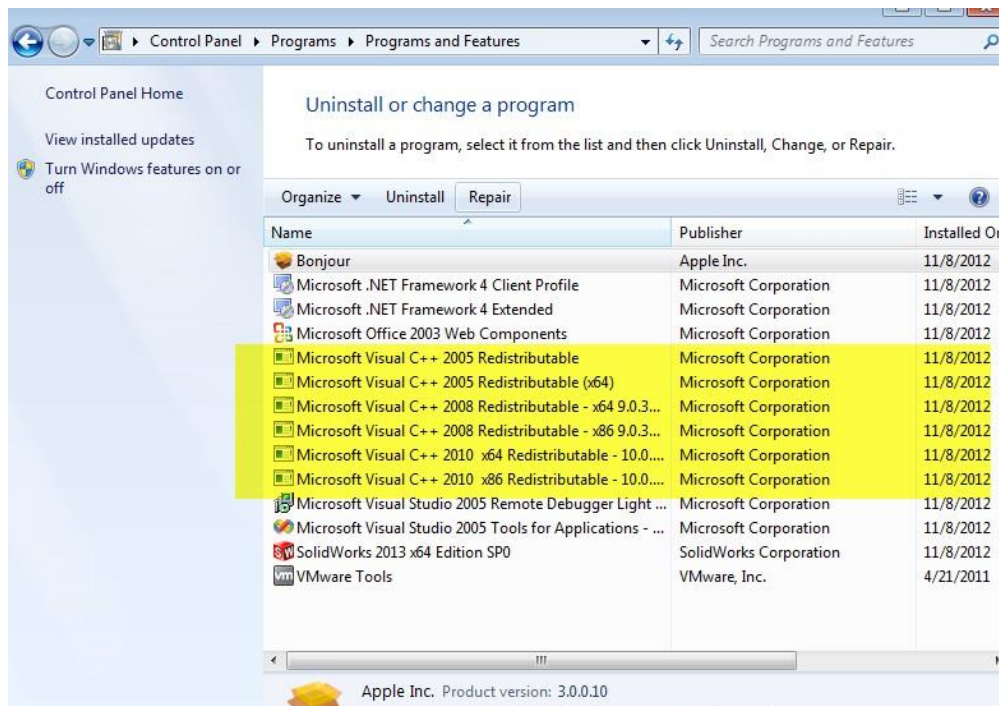
For x64 also delete the following keys if they exist:

- HKEY_LOCAL_MACHINE\SOFTWARE\Wow6432Node\Microsoft\VSTAHost
- HKEY_LOCAL_MACHINE\SOFTWARE\Wow6432Node\Microsoft\VSTAHostConfig
- HKEY_LOCAL_MACHINE\SOFTWARE\Wow6432Node\SolidWorks



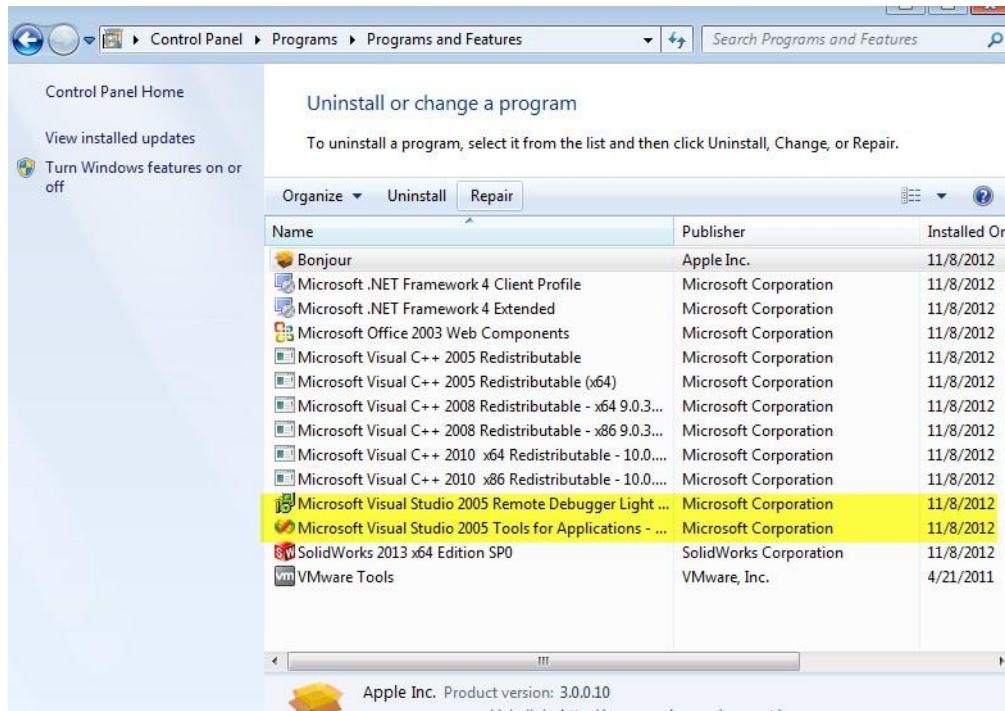


8. Uninstall all C++ Redistributables.

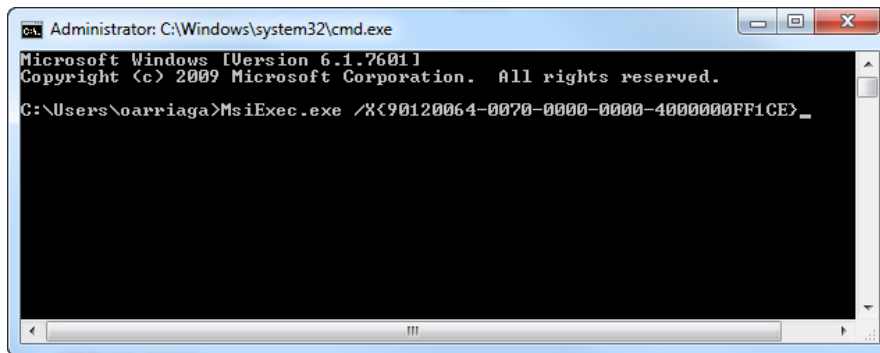


9. Uninstall 'Visual Studio Remote Debugger' and 'Visual Studio Tools for Applications'.





10. Uninstall 'Visual basic 7.1'. To do so, open command prompt and type "MsiExec.exe /X{90120064-0070-00000000-4000000FF1CE}". This command will uninstall this version. Please note that this application is not listed in the Programs and Features list.



11. Uninstall 'Office web components'.

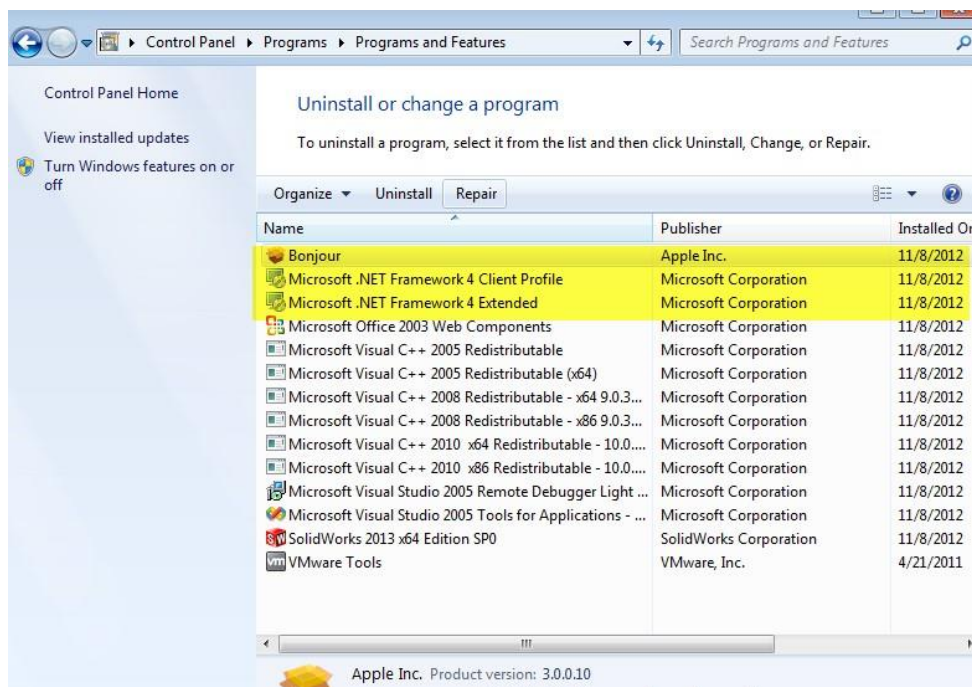


Name	Publisher	Installed On	Size	Version
Microsoft .NET Framework 4 Client Profile	Microsoft Corporation	1/9/2012	38.8 MB	4.0.30319
Microsoft .NET Framework 4 Extended	Microsoft Corporation	1/9/2012	51.9 MB	4.0.30319
Microsoft .NET Framework 4 Multi-Targeting Pack	Microsoft Corporation	10/7/2011	83.4 MB	4.0.30319
Microsoft Device Emulator (64 bit) version 3.0 - ENU	Microsoft Corporation	5/27/2011	2.29 MB	9.0.21022
Microsoft Document Explorer 2005	Microsoft Corporation	5/27/2011		
Microsoft Document Explorer 2008	Microsoft Corporation	5/27/2011		
Microsoft Office 2003 Web Components	Microsoft Corporation	8/17/2012	46.9 MB	12.0.6213
Microsoft Office Communicator 2007 R2	Microsoft Corporation	10/31/2012	77.8 MB	3.5.6907.26
Microsoft Office Professional Plus 2010	Microsoft Corporation	8/3/2011		14.0.6029
Microsoft Office Proofing Tools Kit Compilation 2010	Microsoft Corporation	7/12/2012		14.0.6029
Microsoft Silverlight	Microsoft Corporation	7/5/2012	100 MB	4.1.10329
Microsoft SQL Server 2005	Microsoft Corporation	5/27/2011		
Microsoft SQL Server 2005 Mobile [ENU] Developer T...	Microsoft Corporation	5/27/2011	66.9 MB	3.0.0.0

12. Uninstall the following .NET Frameworks in this order.

- .NET Framework 4 Extended
- .NET Framework 4 Client Profile

13. Bonjour service for Windows



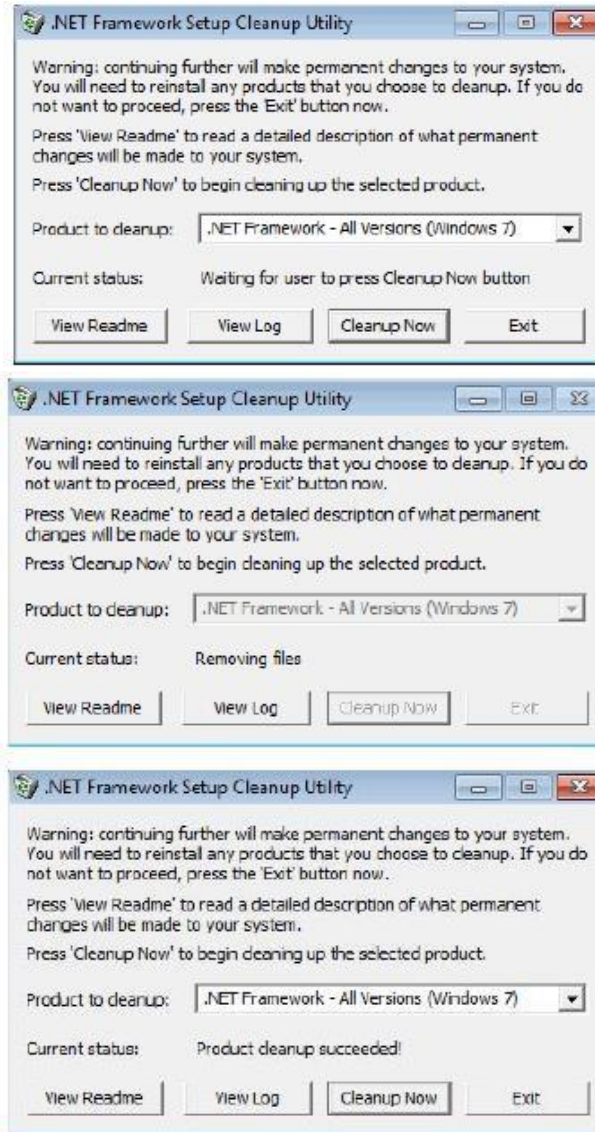
14. (This step is optional) Download the following utility to ensure a complete cleanup of the .NET Frameworks:

<http://www.softpedia.com/progDownload/NET-Framework-Cleanup-Tool-Download-116561.html>

You could use the following guide if in doubt.

<http://blogs.msdn.com/b/astebner/archive/2008/08/28/8904493.aspx>





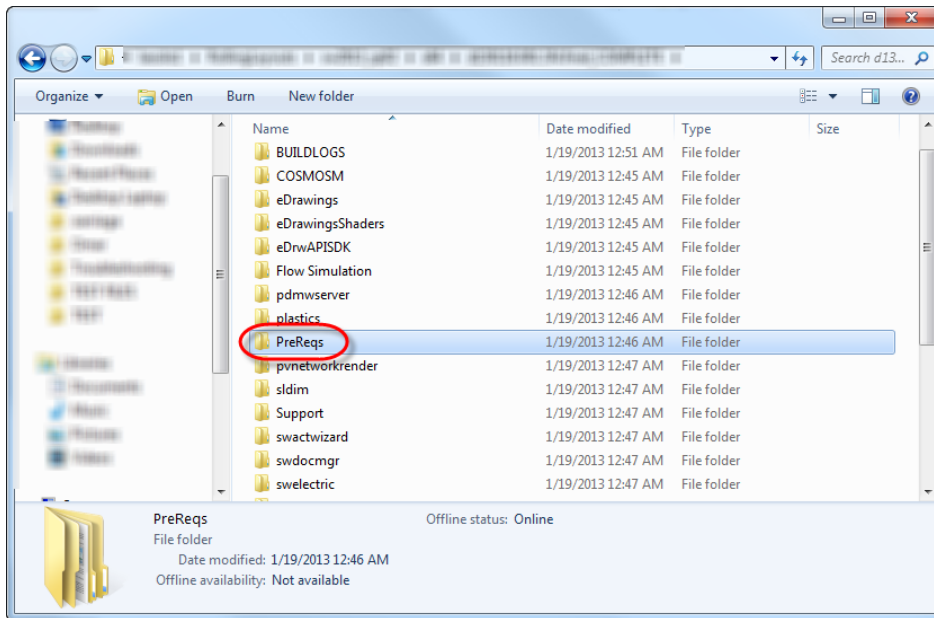
15. Reboot the computer.

The Process – Reinstalling SOLIDWORKS

NOTE: Prior to continuing with the reinstallation it is important that a reboot of the system has been performed.

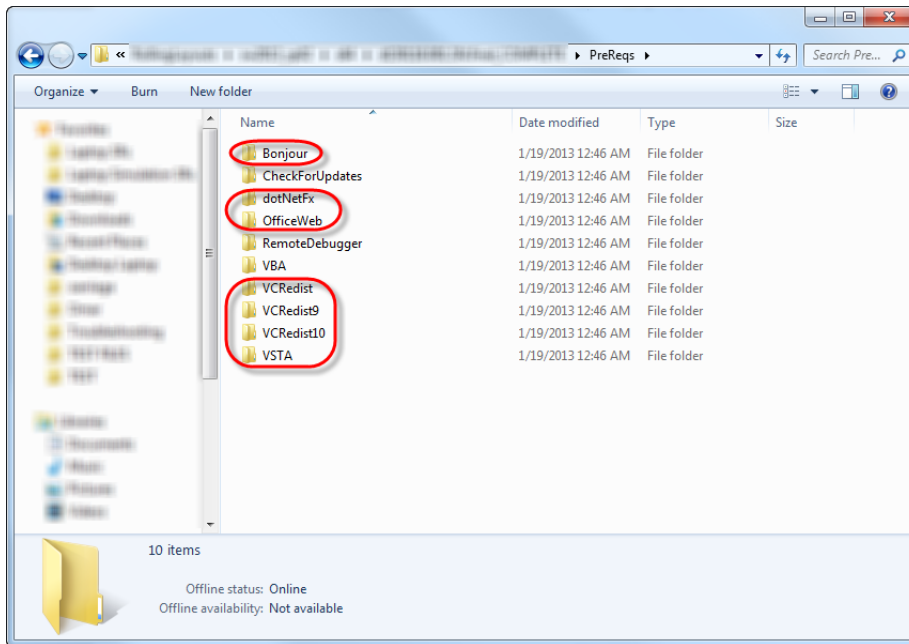
1. Insert the DVD or browse to the downloaded files and open the folder labeled 'PreReqs'.



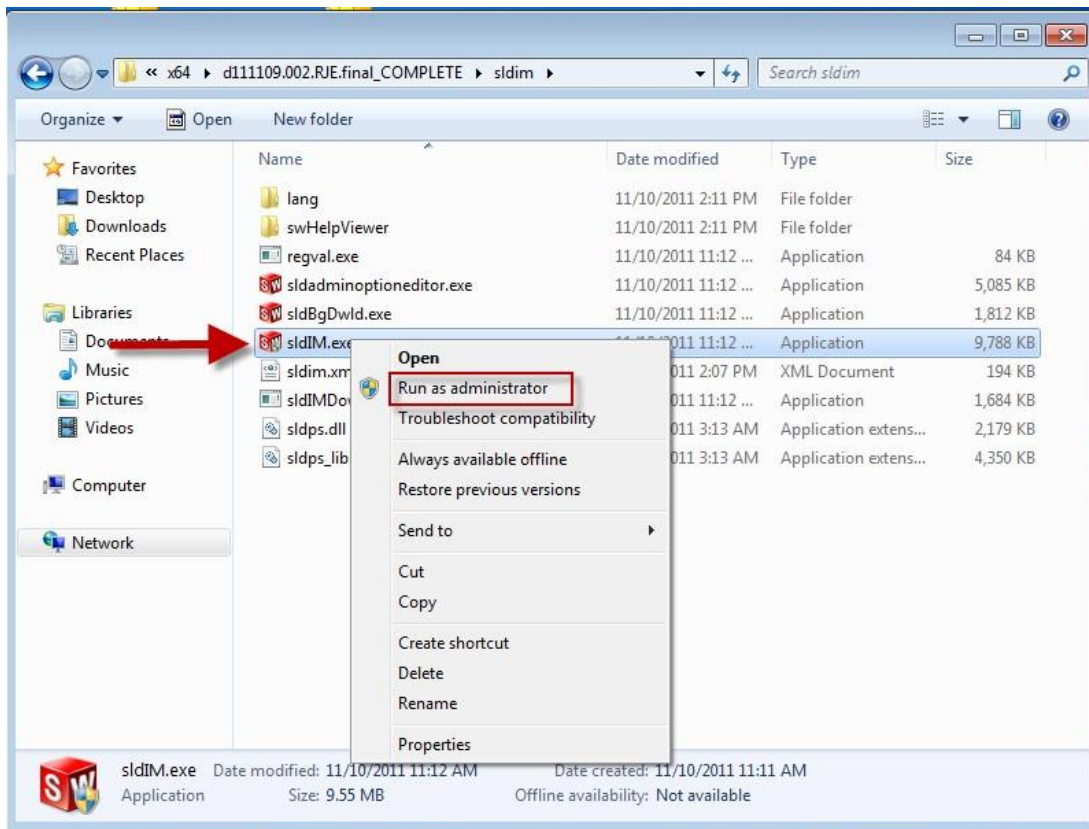


2. Start from the top and install the following prerequisites.
 - Bonjour.msi (for 32-bit) or Bonjour64.msi (for 64-bit)
 - dotNetFx
 - OfficeWeb
 - VCRedist (If is a 64-bit computer, please install the x86 version first followed by the x64. If is a 32-bit computer, only install the x86 version)
 - VCRedist9 (If is a 64-bit computer, please install the x86 version first followed by the x64. If is a 32-bit computer, only install the x86 version)
 - VCRedist10 (If is a 64-bit computer, please install the x86 version first followed by the x64. If is a 32-bit computer, only install the x86 version)
 - VSTA

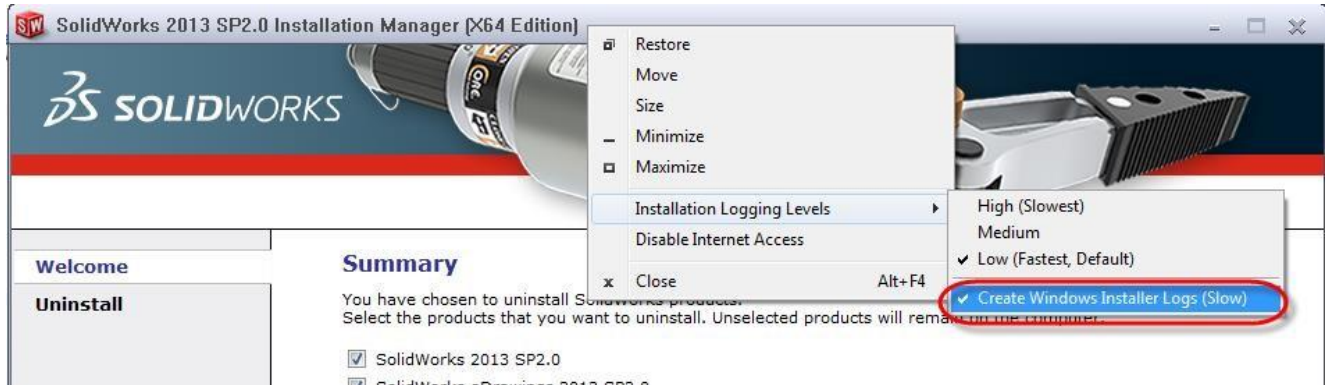




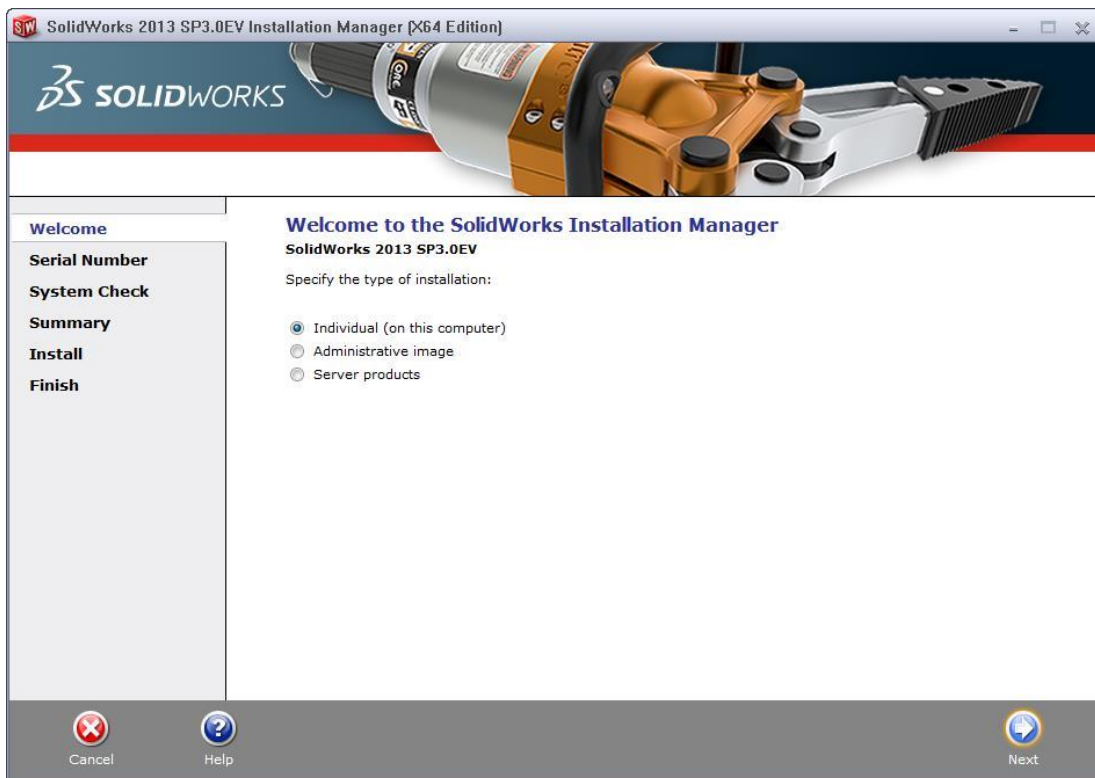
- Once all prerequisites are installed, browse to the folder labeled 'sldim' and RMB the executable labeled 'sldIM.exe', select to run as an administrator.



4. **IMPORTANT** – Once the Installation Manager appears, ensure that the option ‘Create Windows Installer Logs (Slow)’ is enabled.



5. Continue with the installation.



After that, you should be finished and ready to get back to modeling.
As always, feel free to call our technical team with any questions or issues along the way.
Thank you, and have a great day!

